

ELMO RIETSCHLE | BLOWER & VACUUM TECHNOLOGY

SVT SERIES

OIL SEALED SCREW VACUUM PUMP

22 – 55 KW VARIABLE SPEED



INTRODUCING THE **NEW SVT**

THE SVT VACUUM PUMP

- THE BEST CHOICE FOR EFFICIENCY & RELIABILITY IN CENTRAL VACUUM APPLICATIONS

With over 70 years of industrial vacuum engineering expertise, the latest evolution in screw design has arrived with the new SVT range in the Elmo Rietschle S-Series. The new SVT1500, SVT2000 & SVT4000 has been developed to improve the overall performance of this tried and tested oil lubricated screw vacuum pump technology. This evolutionary design provides 50% or more energy savings when compared to other fixed speed technologies.



ADVANTAGE AT A GLANCE

Our evolutionary new design offers:

Premium air end from Ingersoll Rand

- Large diameter, slow running air end for maximum performance, efficiency and reliability.
- Wide flow range (20 - 100%) for optimum performance with minimum power.

Ingenious and simple single oil separator vessel

- Three-stage oil-air separation.
- Ultra-high oil retention
- Simple maintenance access.

Direct coupled motor

- Premium Efficiency IE3 Motor cooled by constant speed fan for optimum cooling, even at low speed.
- Air end and motor rigidly coupled for perfect alignment & supported on 3 point anti-vibration mounts.

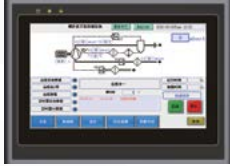
Thermal separation zones for reliable operation

- Two separate temperature controlled zones.
- Cool operating zone for the drive motor.
- Hotter zone for the oil circuit to help prevent moisture condensation & improve oil, filter and bearing life.



Advanced frequency converter

- Advanced PID control to maintain required vacuum level and save energy
- Reduces power close to atmospheric pressure
- Global brand for ease of support
- Optional -Additional Harmonic filters are available upon request



Color touch screen HMI

- Intuitive, simple operation
- Multiple display modes
- Intelligent communications options



High efficiency inlet filter

- Over-sized internal inlet filter for low pressure drop
- Long life - even on dirty applications
- Integrated differential pressure switch, signals to HMI and communications system when filter needs cleaned or changed
- Optional - A full range of suction side accessories including high-capacity cyclone dust filters, combination liquid trap/demister etc. are available



Premium acoustic enclosure

- Class - leading noise reduction
- Quiet & efficient ventilation
- Compact footprint



No cooling water needed



Low cost of ownership



Proven oil lubricated screw technology



Plug & play system right out of the box



Saving precious space using 1 big machine vs several small machines for same capacity



TECHNICAL SPECIFICATIONS

PARAMETERS	SVT 1500	SVT 2000	SVT 4000
Pumping Speed (m ³ /hr)	1390	1940	3605
Nominal Power (kW)	22	37	55
Ultimate Vacuum (mbarA)	3	3	6
Noise (dB(A))	76	78	75
Oil Capacity (Litres)	41	41	90
Inlet (PN10)	DN 150	DN 150	DN 200
Discharge (PN10)	DN 100	DN 100	DN 150
Max./Min. Ambient Temperature (Degree C)	46 / 2	46 / 2	46 / 2
Cooling Air Flow (m ³ /min)	130	130	130
Full Load Current Max @ 400V (Amps)	55	85	125
Voltage (V)	400 ± 10%	400 ± 10%	400 ± 10%
Frequency (Hz)	50	50	50
Total Weight (kg)	1550	1650	3113
Dimensions (mm) L x W x H	2040 x 1360 x 1650	2040 x 1360 x 1650	2550 x 1850 x 1950



TYPICAL **APPLICATIONS**



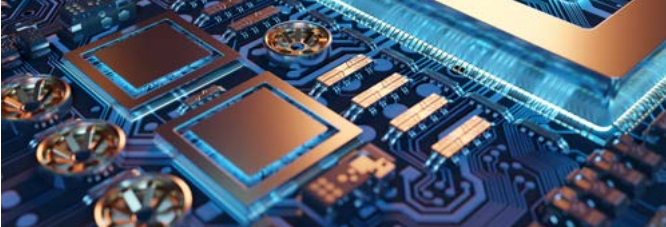
FOOD & BEVERAGE CAN MANUFACTURING AND DECORATING LINES

Vacuum is used in multiple processes, mostly for holding and pick & place



CONTAINER GLASS MANUFACTURING

Vacuum is applied to the bottle mould at the same time as internal pressure to improve accuracy and reduce wall thickness



HOUSE VACUUM IN ELECTRONICS INDUSTRY

Vacuum is used for holding, lifting, packaging etc

PRODUCT **BENEFITS**

Energy Saving

By combining a reliable, highly efficient vacuum pump with variable speed drive and accurate control, the SVT will maximise energy savings by ensuring the correct vacuum level and flow are maintained and no more. Excess vacuum causes increased volume flow, needing more pumping speed and more energy. Savings of 50% or more are possible when compared to other fixed speed technologies.

Low Maintenance Costs

With an oversized integrated inlet filter and long life oil and separator, all easy to access and change when needed, the maintenance cost of the SVT is kept to a minimum.

Water Saving

Water is becoming an expensive resource, both at the supply and disposal side. The SVT needs no water. When compared to a liquid ring vacuum pump, the SVT will use 30-50% less energy and no water.

Simple Installation

The SVT is a truly Plug & Play machine. Simply position on a level rigid surface, connect power and the vacuum connection and it's ready to go. The intuitive HMI controller makes parameter setting very simple and the multi protocol communications make it easy to integrate with factory control and monitoring systems.

Victoria & Tasmania

13 - 17 Progress Street
Dandenong South Vic 3164
Ph: 03 9212 5800
Fx: 03 9792 0274

Western Australia

7 Winton Street
Kewdale WA 6105
Ph: 08 9352 6001
Fx: 08 9353 1057

New South Wales & ACT

13 Arnott Place
Wetherill Park NSW 2164
Ph: 02 9828 2394
Fx: 02 9620 7955

Queensland

Unit 5, 17 Boniface Street
Coopers Plains Qld 4108
Ph: 07 3276 4000
Fx: 07 3875 1529

Townsville

49-51 Jay Street
Mount St John, Townsville, 4818
Ph: 07 4774 8392
Fx: 07 4774 6602

South Australia & NT

Lot 20 Kenworth Road
Gepps Cross SA 5094
Ph: 08 8359 9953
Fx: 08 8349 4921

Northern Territory

Shed 2, 85 Winnellie Road
Winnellie NT 0820
Ph: 08 8947 4449
Fx: 08 8947 4446

New Zealand

40 Anvil Road
Silverdale Auckland 0932
Ph: 09 426 0370
Fx: 09 426 0371

Christchurch

1/8 Export Avenue
Harewood 8051
Ph: 03 359 0370
Fx: 08 326 0371



Elmo Rietschle South East Asia

www.gardnerdenver.com/elmorietschle

sales.au@irco.com